



PEARESWOOD PRIMARY NEWSLETTER

Dear Families,

I wanted to take a moment to express my heartfelt thanks to all of you for your enthusiastic participation in our recent year group coffee mornings. It was wonderful to see such an excellent turnout, and I'm delighted to share that we received an abundance of positive feedback from parents who attended. Our coffee mornings provide a valuable opportunity for parents to come together, kept fully up to date with school expectations and procedures, and strengthen our sense of community within the school. Your active engagement and open discussions are what make these gatherings so meaningful, and I am grateful for your continued support.

One highlight from this past week was the chance to spend time with our Golden Ticket winners and celebrate their remarkable achievements. It was a joy to witness their accomplishments and to acknowledge their hard work and dedication.

I would also like to extend my appreciation to all the parents who have supported their children in attending early morning learning sessions for years 6, 1, and Reception. Your commitment to your child's education is commendable, and it makes a significant difference in their learning journey.

Looking ahead, I wanted to inform you that next Monday, we will be holding a meeting specifically for year 6 parents. This meeting will focus on providing information regarding the admission process to secondary school and an overview of the SATs (Standard Assessment Tests). We understand that this transition can be a significant milestone, and we want to ensure you have all the necessary information to support your child during this time.

In addition, our children will be participating in an attendance assembly next week. We believe that recognising and celebrating good attendance is vital, as it contributes to their overall success in school.

Once again, thank you for your active involvement in our school community and we look forward to many more positive interactions in the future. If you have any questions or concerns, please do not hesitate to reach out to us. Your feedback is always welcomed and appreciated.

Wishing you a wonderful weekend.
Yours sincerely,
Mrs Ferla and the Peareswood Team.

have a
GREAT
WEEKEND



Upcoming Events

25th September
Year 6 Coffee Morning

27th September
Year 4 Acacia Swimming

29th September
Year 4 Palm Swimming



We are at the start of a new year!



It's a draw all house points are currently the same!

keep trying to get your tokens to get your house in the lead!



Congratulations! We hope you enjoyed your well deserved Hot Chocolate!



Thank you to all the parents who have supported the community lending library this week. It is open for all parents to come and borrow a book when you drop your child off in the morning or when you collect them at the end of the day. Happy reading!

ELSIE



Elsie joined the Inclusion team meeting this week and helped us to write her new timetable which can be found on the website.

SAFEGUARDING

This online safety guide is an updated examination of WhatsApp – the globally popular messaging platform which contains both old and new hazards for young users.



ATTENDANCE

School Target- 96%

Current Attendance - 94.15%

- Nursery AM -96.18% Nursery PM- 80.77%
- Poplar - 93.43% Lime - 90.15%
- Bay- 92.59% H/Chestnut-92.96%
- Box-93.57% Bamboo - 93.91%
- Ash - 97%** **Cypress - 98.59%**
- Palm- 87.89% **Acacia - 96.1%**
- Holly- 97%** Myrtle- 95%
- Eucalyptus-94.97% **Willow - 96.19 %**

Green=met the minimum attendance rate



WELL DONE!

Class	Peareswood Champion
Nursery AM/PM	Melody/ Hridaan
Lime	Prisha
Poplar	Alanna
H/Chestnut	Joshua
Bay	Lacie
Bamboo	Olivia-Mae
Box	Harvey
Cypress	Ivy
Ash	Millie
Acacia	Toni
Palm	Paisley
Holly	Iram
Myrtle	Esther
Willow	Sophie
Eucalyptus	Bobby



SCHOOL VALUES



This terms value is Pride-

EYFS- We are really proud of how Reception and Nursery are eating their dinner in the dinner hall, putting their trays away nicely.

KS1- Year 1 have been showing lots of pride in their presentation when writing the date in their books, practicing using our handwriting lines in school and at home.

KS2- Year 6 have created some lovely double page spreads around William Shakespeare and have been proudly showing adults across the school.



Spotlight on Maths

As a school, we follow and adapt the White Rose Maths scheme. Our first focus of the year is Place Value. This is because it is the foundation for all other mathematical knowledge. Place Value is knowing the value of digits within numbers, depending on its position within a number.

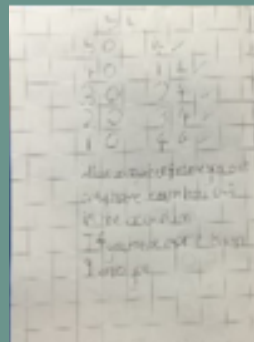
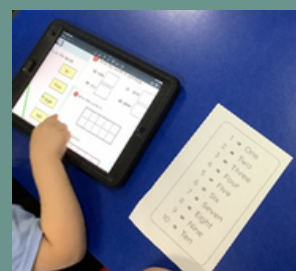
EYFS

Reception is learning about more and fewer. The children will be given groups of objects and asked which one they think has more or fewer objects.

The children have also been looking at identifying the 'odd one out' in a group of items. All the while, making sure the children are using the correct language when responding.

KS1

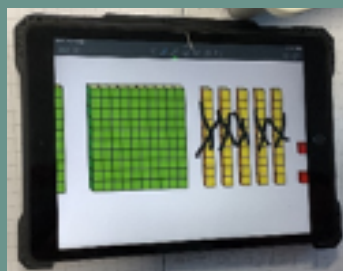
Year 1 are learning about numbers to 10 and beginning to write the numbers in words.



Year 2 are learning about recognising 10s and 1s. They have been showing their understanding of partitioning 10s and 1s.

LKS2

Year 3 are learning about numbers up to 1000. They are continuing to use visual representations, in the form of Dienes, to help with their learning.



Year 4 are learning about numbers up to 10 000 and are using concrete manipulatives to experiment with different numbers and to help partitioning larger numbers.



UKS2

Year 5 are learning about numbers up to 1 000 000. Using place value charts to focus their learning and to help the children's understanding of the value of individual digits.

Year 6 are learning about numbers up to 10 000 000. They are looking specifically at the value of individual digits. Also, Year 6 are showing the presentation expectations fantastically.

