



Peareswood  
Primary School

# SEND INFORMATION

Ignite the spark, reveal the champion



# CONTENTS

- What is SEND?
- Raising concerns
- Process to receive support
- Consent
- EIT
- External agencies
- DLA
- EHCP - Parental request





What are the main areas of SEND?



## Communication and Interaction

**Specific Learning Difficulties (SPLD) e.g dyslexia, dyscalculia, Moderate Learning Difficulties (MLD), Severe Learning Difficulties (SLD), Profound and Multiple Learning Difficulty (PMLD).**



## Cognition and learning

**Speech, Language and Communication Needs (SLCN) and Autistic Spectrum Disorder (ASD).**



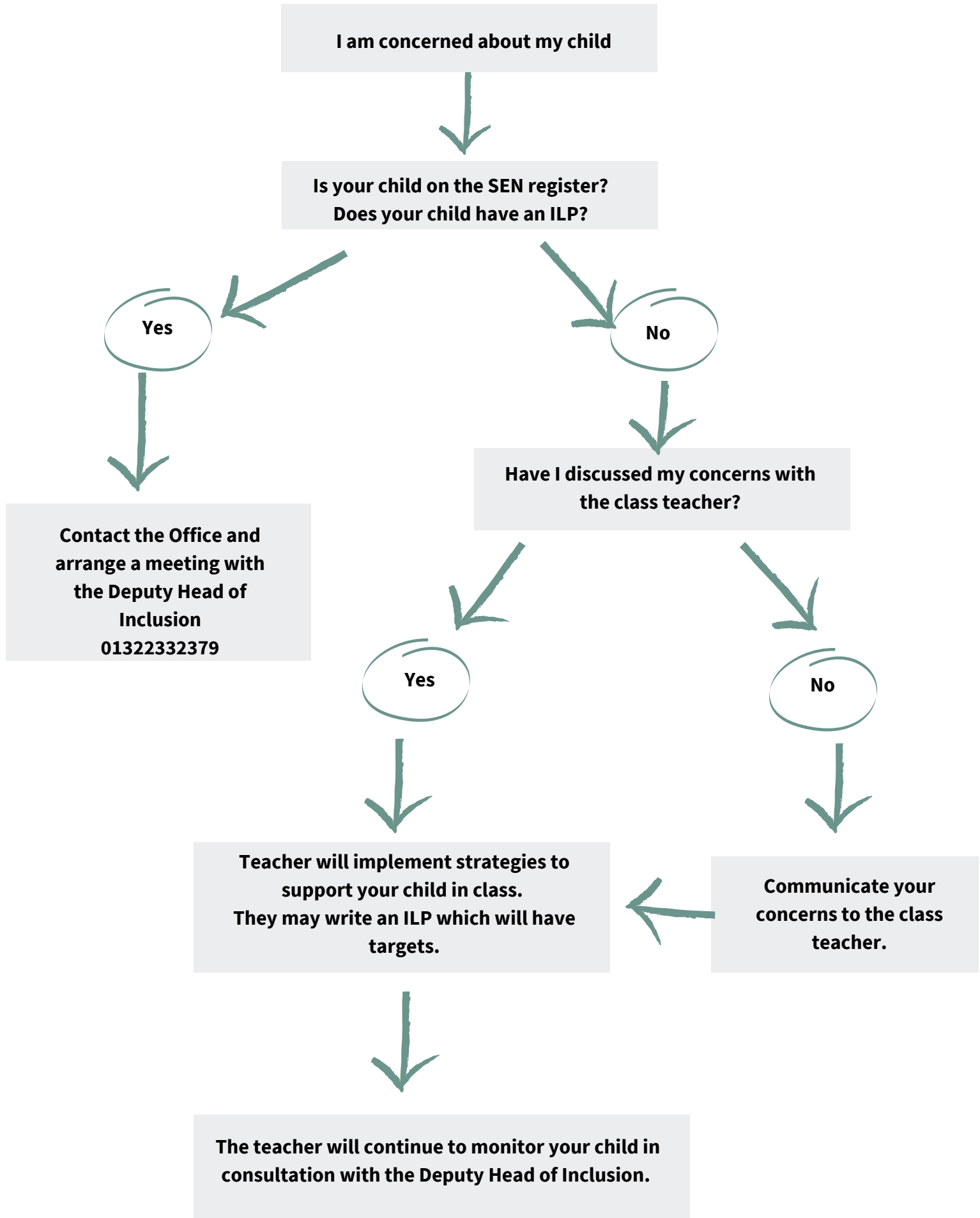
## Sensory and/or Physical needs

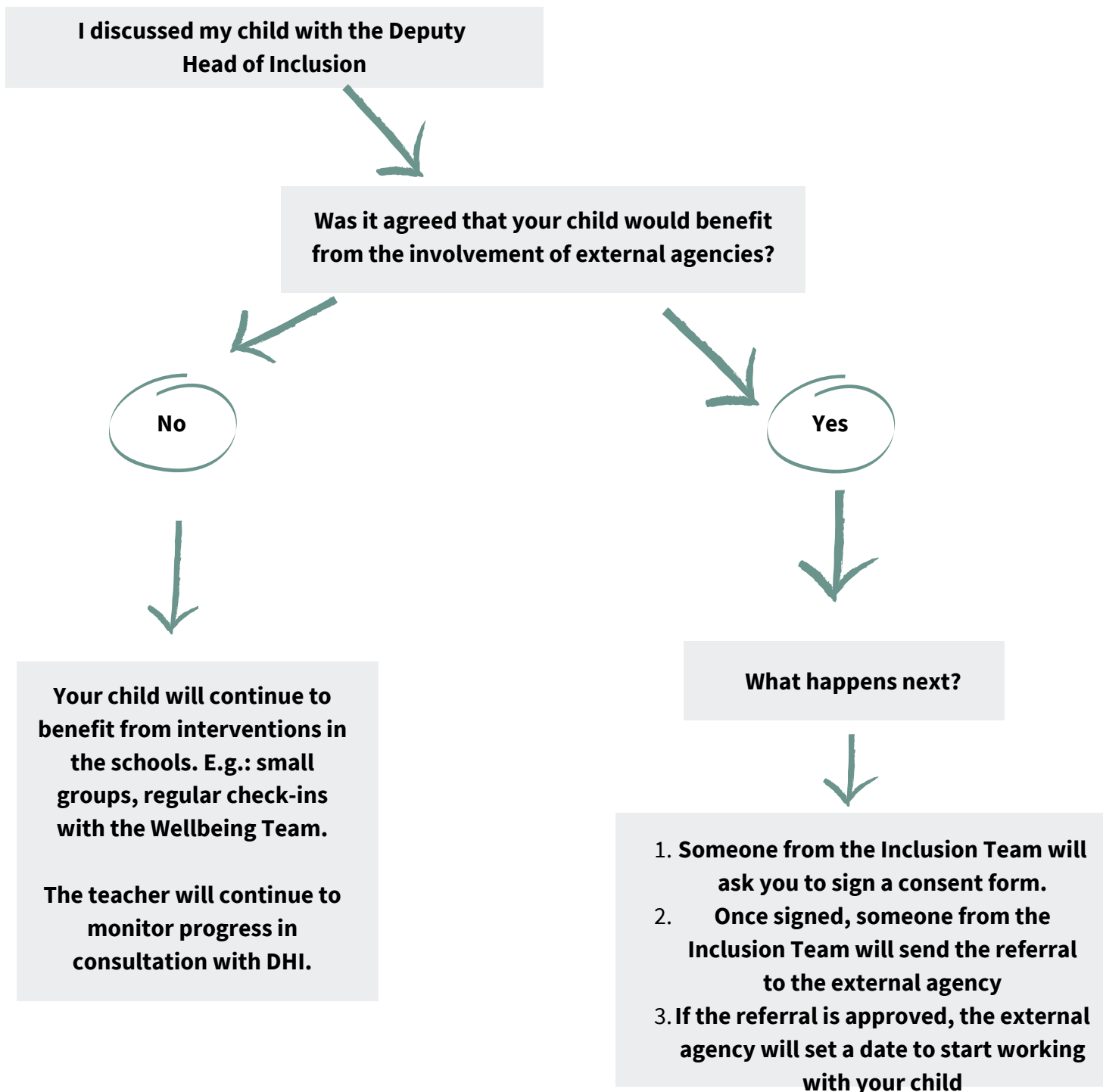
**Visual Impairment (VI), Hearing Impairment (HI), Multi-sensory Impairment (MSI) and Physical Disability (PD).**



## Social, Emotional and Mental Emotional Health

**Depression, Attention Deficit Hyperactivity Disorder (ADHD), Eating disorders, Anxiety Disorders, Mental Health issues, and Social disorders.**





The majority of external agencies inform the parents about their child's progress periodically, but if you haven't received any update contact the School Office with your request.

Someone from the Inclusion Team will try to respond your query as soon as possible.

## Consent



Someone from the Inclusion Team will ask you to sign specific forms for your children to receive support from the Early Intervention Team (EIT) or specific external agencies from Oxleas NHS Foundation.



### What happens if I don't give consent?

**You are free to refuse consent or remove consent at any point. This will not affect in any way the access that you have to other NHS services and external agencies. However Paediatric, Educational Psychologist and SEMH Partner referrals will not happen.**



### What does it mean if I give my consent for the school to discuss my child?

**Consultations between external agencies and schools are confidential. By giving consent for the school to discuss your child with external agencies, you are also giving consent for external agencies to record this on the Oxleas NHS Foundation Trust clinical records system.**

## Early Intervention Team



**The Early Intervention Team (EIT) is a multi-disciplinary service who works with Bexley schools supporting children aged 3 to 18 who need extra help to thrive in school. Sometimes meetings with adults who know the child, observations, assessments or one to one work with the child. We can also signpost schools to additional services for children and their families where it is thought helpful.**



1 →

**Educational Psychologists (EPs) - undertake detailed consultation and assessments of children in the context of school, to explore any difficulties with learning the child or young person may be having, as well as identifying strengths.**

2 →

**Additional Educational Needs/Special Educational Needs Partner - is a teacher who can support school staff with early identification of learning needs for students where schools are uncertain of how to best support progress.**

3 →

**Social, Emotional and Mental Health (SEMH) Partners - They undertake observations to help identify potential social and emotional or behavioural difficulties that prevent learning and suggest strategies and interventions for supporting the child.**

4 →

**Early Intervention Social Worker - is available in some schools to offer assistance to families who are experiencing difficulties at home. They offer advice to schools to prevent more significant Safeguarding and Child Protection issues.**

5 →

**Special Educational Needs (SEN) Strategic Support Partners - experienced SENCOs who support schools by looking at school systems and data to help children and young people who are having difficulties with learning**

6 →

**Early Intervention Team Managers - teachers with experience in inclusion and SEN who line manage the multi-disciplinary Early Intervention Team members and coordinate the termly planning meetings with the school**



## Community Paediatrics Service



A team of specialist children's doctors who work closely with other professionals in health and other agencies. They see children with a variety of medical conditions that may have an impact on their development and learning. They hold clinics at Queen Mary's Hospital, Erith District Hospital and Murchison Clinic.



**Child and Adolescent Mental Health Services (CAMHS)** - Provides mental health assessment and treatment services to children, young people and their families/carers living in the borough of Bexley. It also provides advice, consultation and support to the other individuals and agencies involved in children's care.



## Bexley CAMHS Mental Health Support Team in Schools (MHST)

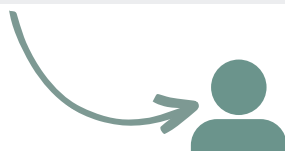
- MHST is part of Bexley CAMHS . MHST work in schools by helping them plan and care for the emotional well-being of their pupils. MHST do this mostly by discussing children and young people who are struggling with their emotions and/or behaviours in order to find how best the school can support them.



**JUMP AHEAD PLUS TEAM** - This team is made up of Health and Educational professionals- (Occupational therapists, Physiotherapists and an Advisory teacher) to offer support and advice for children with motor co-ordination skill difficulties.



**Joint Communication Team** - JCT support children and young people with communication difficulties who attend mainstream schools. By helping your child to communicate to the best of their ability JCT hope to improve learning, social skills and independence



Speech and language therapists

Speech and language therapists assistants



## External agencies



**Advisory Service for children on the Autism Spectrum** - support children and young people with ASD to achieve social inclusion, meet their educational potential and go on to make a positive contribution to the wider community.



**This is a post-diagnosis service. If your child has not got a diagnosis and you have concerns, a referral needs to be made to the Community Paediatrics Service first.**



**The Hearing Impaired Service** is part of the Specialist Teaching Services team based at the Civic Offices. Our staff have specialist qualifications and training in the education of Deaf and Hearing Impaired children. We have one qualified Teacher of the Deaf and two HI Specialist Support Assistants working in the service.



**SLD Visual Clinic** - a service is for children with specific learning difficulties such as Dyslexia and Developmental Coordination Disorder. This service can help children with symptoms when reading such as frequent headaches, blurring of print, double vision, distortion within text such as movement of words, glare from the page, missing words or lines, etc. A routine eye examination may not reveal an abnormality but an assessment by an orthoptist with specialist knowledge of reading problems may find visual control or co-ordination problems that can be treated.



**Horizons Academy Bexley** provides high quality education and support to pupils in Key Stages 1-4, who have been permanently excluded or are at risk of exclusion from their mainstream school. They also provide a short-term provision at our Satellite centre for learners, who are unable to attend school because of a medical need.

## DLA



**Disability Living Allowance (DLA)** - DLA is a social security benefit in the United Kingdom paid to eligible claimants who have personal care and/or mobility needs as a result of a mental or physical disability. It is tax-free, non-means-tested and non-contributory.

DLA for children may help with the extra costs of looking after a child who:

- is under 16
- has difficulties walking or needs much more looking after than a child of the same age who does not have a disability



### How to claim

To claim DLA for a child you need to be their parent or look after them as if you're their parent. This includes step-parents, guardians, grandparents, foster-parents or older brothers or sisters.

If your child currently lives in England or Wales you can apply by either:

- printing off and filling in the DLA claim form
- phoning the Disability Living Allowance helpline and asking for a printed form

**Disability Living Allowance helpline**

Telephone: 0800 121 4600

Textphone: 0800 121 4523



Relay UK (if you cannot hear or speak on the phone): 18001 then 0800 121 4600

British Sign Language (BSL) video relay service if you're on a computer - find out how to use the service on mobile or tablet Monday to Friday, 9am to 5pm

## EHCP - Parental request

**Download EHCP Parent/Carer and Professionals Request Form from Bexley Local Offer**



**Complete EHCP Parent/Carer and Professionals Request Form**  
To help you complete the request form, gather as much evidence as you can about your child/young person. This can include reports from professionals who have assessed or supported them. For example:

**Educational Psychologist (EP)**  
**Specialist Advisory Services**  
**Speech & Language / Occupational Therapy**  
**Community Paediatrics**  
**Hearing/Visual Impairment Services**  
**Child & Adolescent Mental Health Service (CAMHS)**  
**Early Years Advisor/Portage/BEAS**



**Email EHCP Parent/Carer and Professionals Request Form to [Specialneeds.ELS@bexley.gov.uk](mailto:Specialneeds.ELS@bexley.gov.uk)**

### Support to complete the EHCP application



If you need further information or do not understand any of the questions, you can contact the Bexley SEN Business Admin team.

Telephone - 0203 045 3311

Email: [specialneeds.ELS@bexley.gov.uk](mailto:specialneeds.ELS@bexley.gov.uk)



You can download the 'EHC Needs Assessment Parent/Carer Prompt Toolkit' or request a copy to the SENCO.

Peareswood Road, London, DA8 3PR  
[www.peareswoodprimaryschool.co.uk](http://www.peareswoodprimaryschool.co.uk)



**Peareswood**  
Primary School



**Woodland**  
Academy Trust